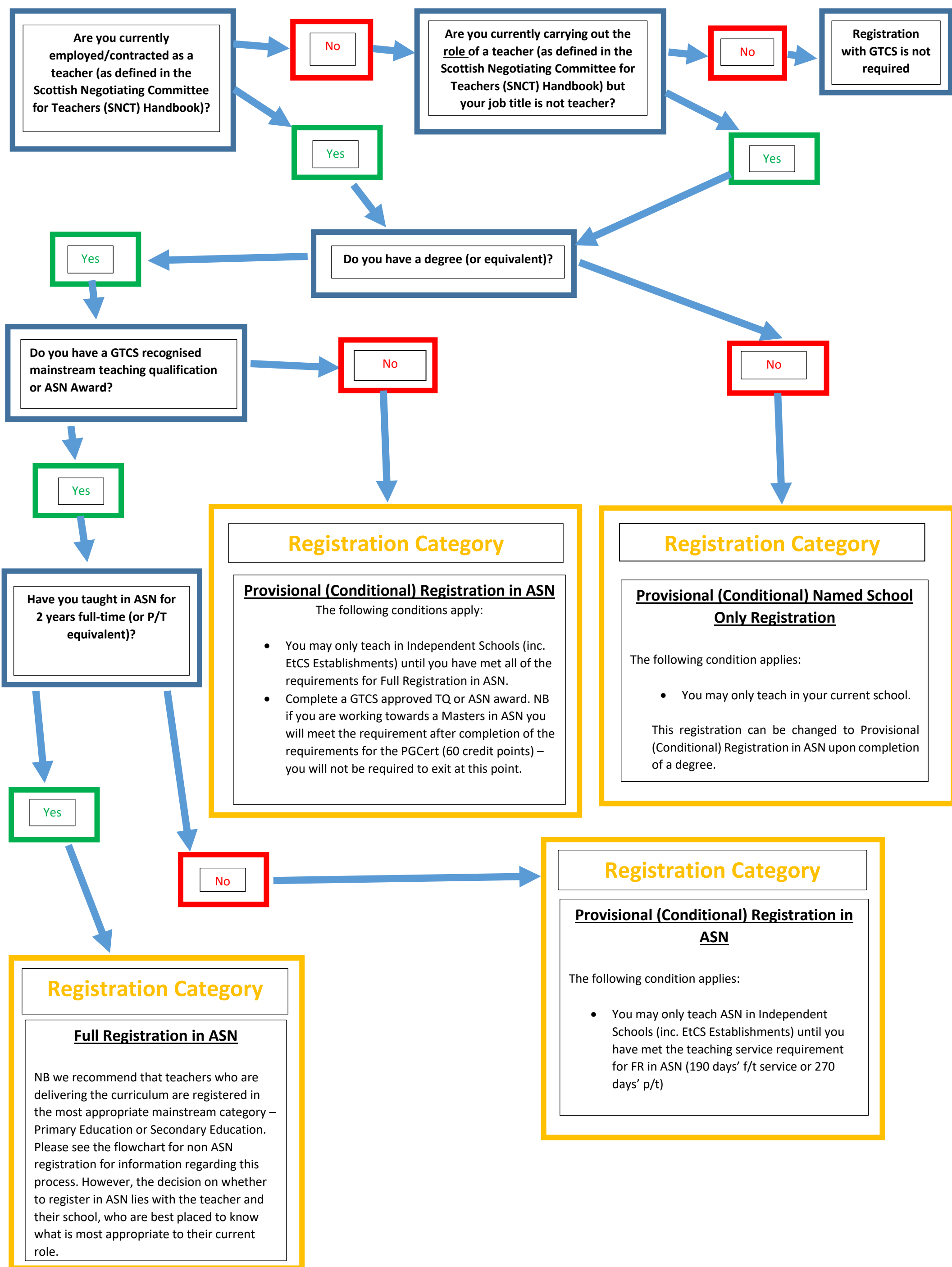


Route Map specifically outlining the pathways to ASN registration for teachers in Independent Schools (including Education through Care Scotland Establishments) who were working in an ASN teaching capacity in their current school prior to 1 October 2017.



Are you currently employed/contracted as a teacher (as defined in the Scottish Negotiating Committee for Teachers (SNCT) Handbook)?

No

Are you currently carrying out the role of a teacher (as defined in the Scottish Negotiating Committee for Teachers (SNCT) Handbook) but your job title is not teacher?

No

Registration with GTCS is not required

Yes

Yes

Yes

Do you have a degree (or equivalent)?

Do you have a GTCS recognised mainstream teaching qualification or ASN Award?

No

No

Yes

Registration Category

Provisional (Conditional) Registration in ASN

The following conditions apply:

- You may only teach in Independent Schools (inc. EtCS Establishments) until you have met all of the requirements for Full Registration in ASN.
- Complete a GTCS approved TQ or ASN award. NB if you are working towards a Masters in ASN you will meet the requirement after completion of the requirements for the PGCert (60 credit points) – you will not be required to exit at this point.

Registration Category

Provisional (Conditional) Named School Only Registration

The following condition applies:

- You may only teach in your current school.

This registration can be changed to Provisional (Conditional) Registration in ASN upon completion of a degree.

Have you taught in ASN for 2 years full-time (or P/T equivalent)?

Yes

No

Registration Category

Provisional (Conditional) Registration in ASN

The following condition applies:

- You may only teach ASN in Independent Schools (inc. EtCS Establishments) until you have met the teaching service requirement for FR in ASN (190 days' f/t service or 270 days' p/t)

Registration Category

Full Registration in ASN

NB we recommend that teachers who are delivering the curriculum are registered in the most appropriate mainstream category – Primary Education or Secondary Education. Please see the flowchart for non ASN registration for information regarding this process. However, the decision on whether to register in ASN lies with the teacher and their school, who are best placed to know what is most appropriate to their current role.